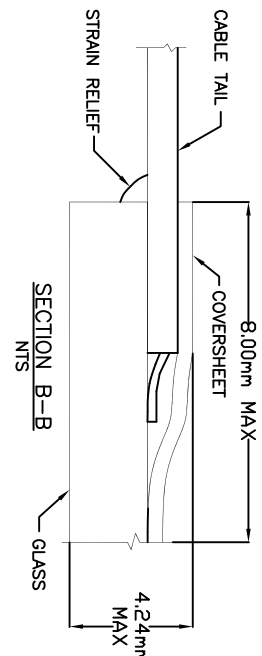
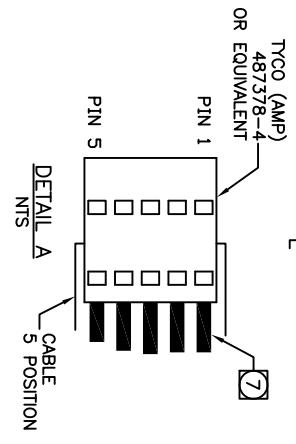
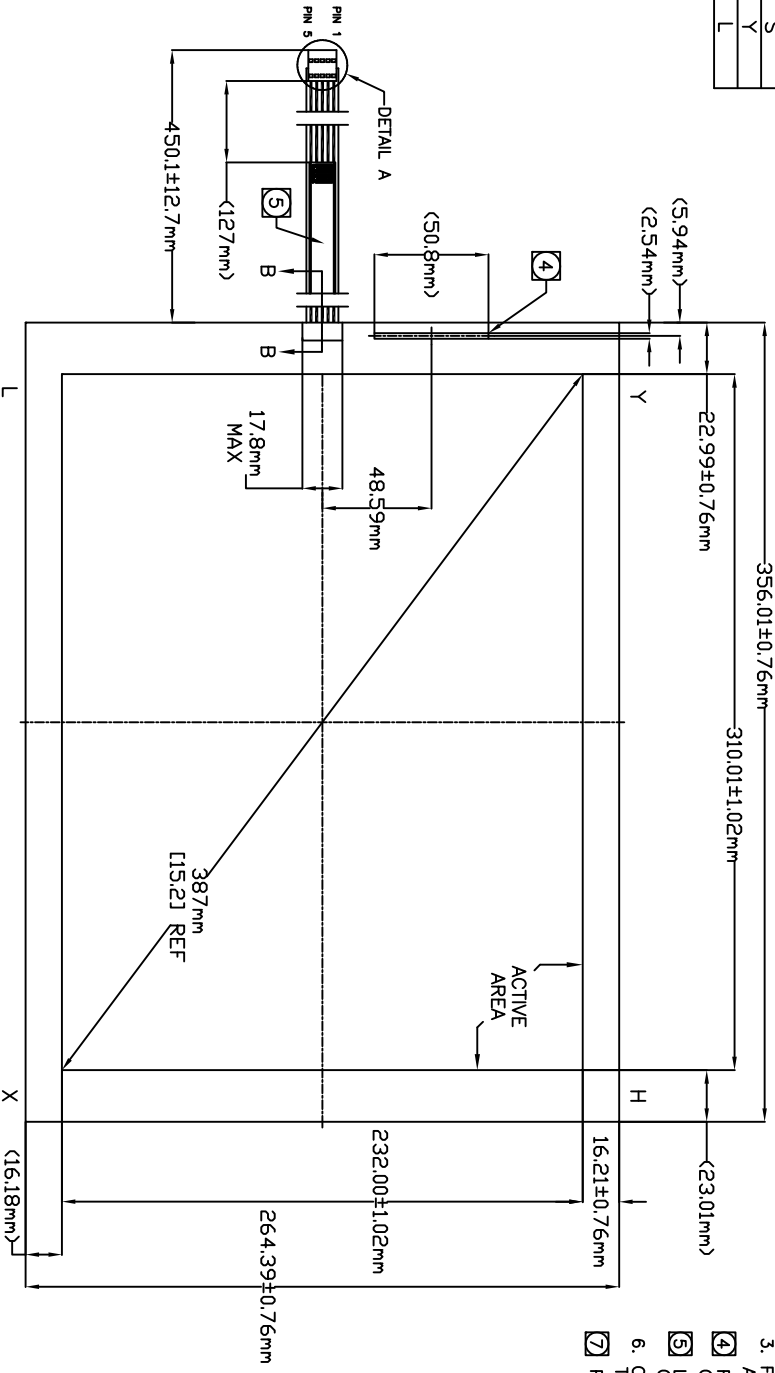


CONNECTOR PINOUT	
PIN NO.	DESIGNATION
1	H
2	X
3	S
4	Y
5	L



- NOTES:
1. GLASS THICKNESS 3.18mm NOMINAL.
  2. FINISHED PART THICKNESS 3.48mm NOMINAL.
  3. FINISHED PART THICKNESS AT CABLE ATTACHMENT AREA 4.24mm MAX.
  4. FINISHED PART THICKNESS AT COVERSHEET CONTACT 3.86mm MAX.
  5. LABEL TO BE ATTACHED TO FRONT SIDE OF CABLE.
  6. CABLE IS ATTACHED TO THE LEFT SIDE OF TOUCHSCREEN AT CENTER POINT AS SHOWN.
  7. PIN 1 TO BE LOCATED AS SHOWN (DETAIL A).

TOUCHSCREEN TABULATION		
PART NUMBER	TYPE	
E266217	OH1	
E421378	OA1	

THIS INFORMATION IS CONFIDENTIAL AND PROPRIETARY TO TYCO ELECTRONICS CORPORATION AND ITS WORLDWIDE SUBSIDIARIES AND AFFILIATES. IT MAY NOT BE DISCLOSED TO ANYONE, OTHER THAN TYCO ELECTRONICS PERSONNEL, WITHOUT WRITTEN AUTHORIZATION FROM TYCO ELECTRONICS CORPORATION, HARRISBURG, PENNSYLVANIA USA.

LOC	08
DIST	08

REV	DATE	BY	APP'D	DESCRIPTION
1	11/29/07			REVISION RECORD

DIMENSIONS		DIMENSIONS	
MM	INCHES	MM	INCHES
0.13	0.005	0.13	0.005
0.25	0.010	0.25	0.010
0.51	0.020	0.51	0.020
1.27	0.050	1.27	0.050
2.54	0.100	2.54	0.100
5.08	0.200	5.08	0.200

DATE	02/23/08	APPROVAL	ACQUINCHI	HEAT TREAT	N/A
DRW	F. NGUYEN	DATE	02/23/08	BY	F. NGUYEN
MARKETING DRAWING SON-AS-FL151-001-0XX-R SHEET 1 OF 1					
Tyco Electronics Corporation Tyco Electronics Harrisburg, PA 17105-3608					